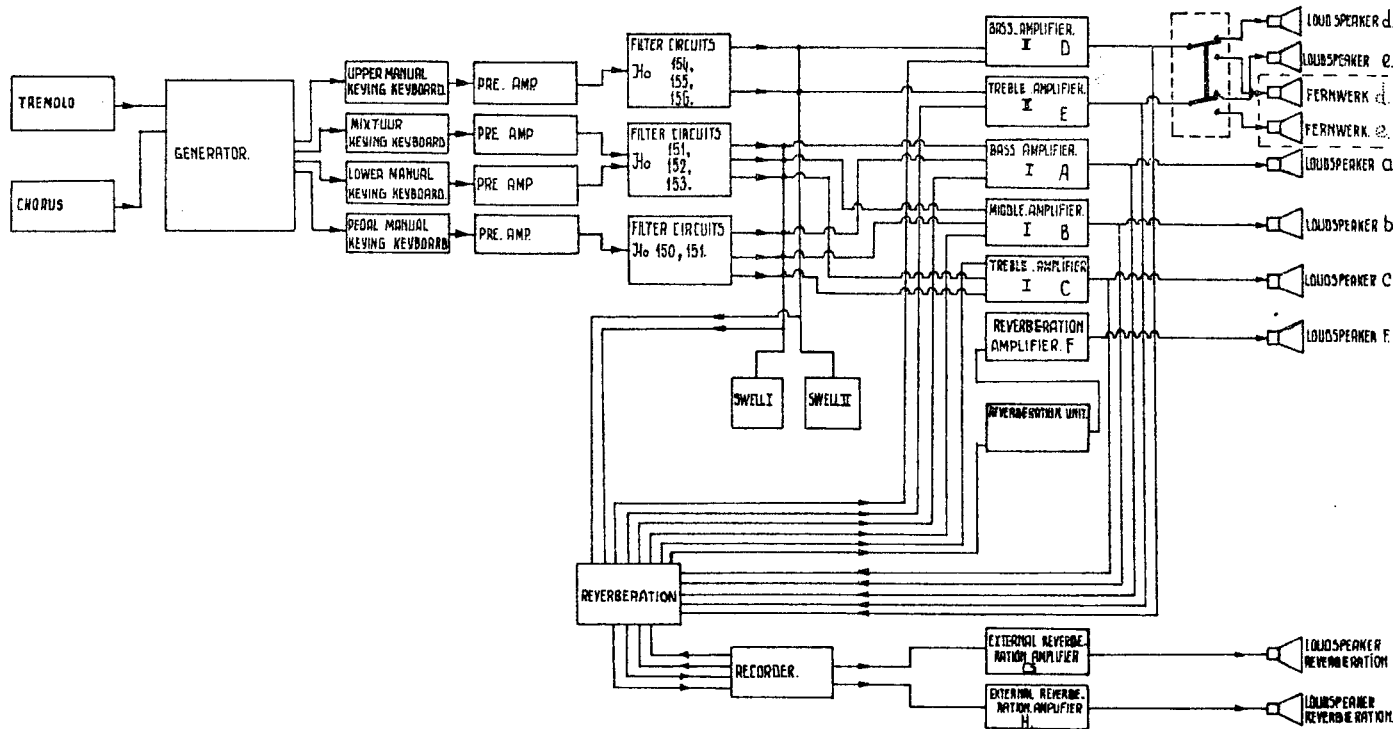
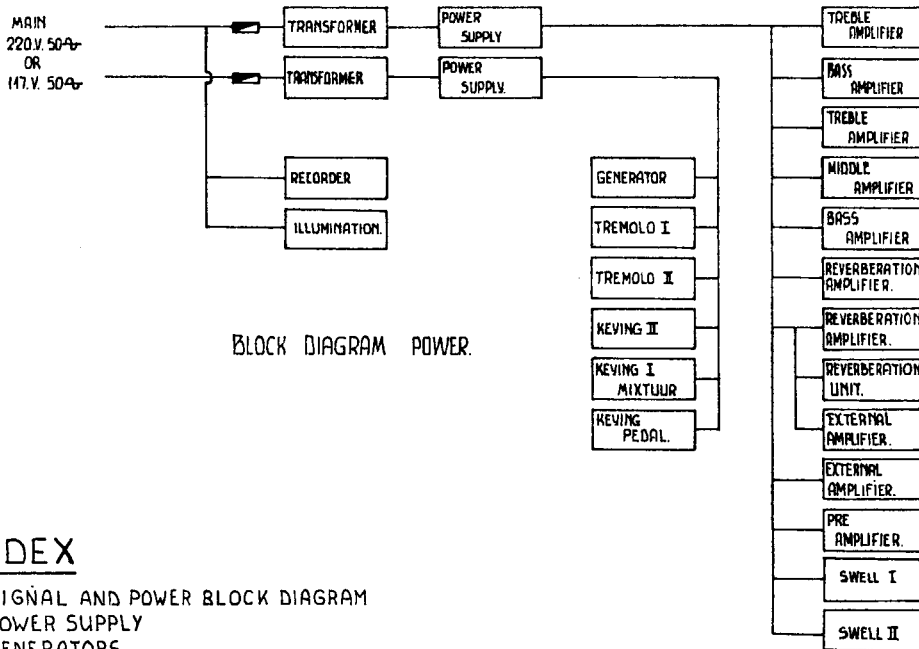


=====
= S C H E M A T I C D I A G R A M S =
= J O H A N N U S =
= K - I I =
= alterations reserved =



BLOCK DIAGRAM SIGNAL

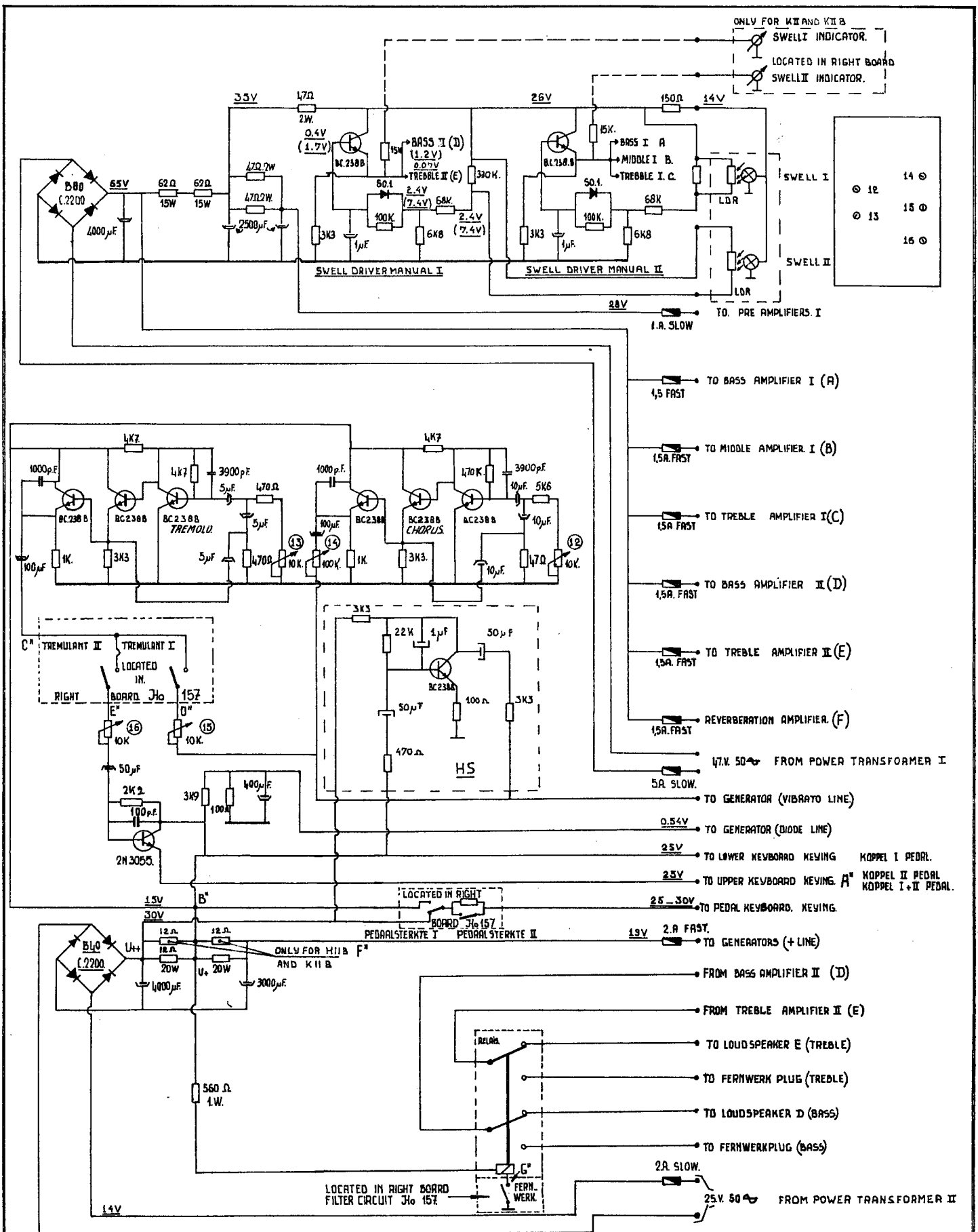


BLOCK DIAGRAM POWER

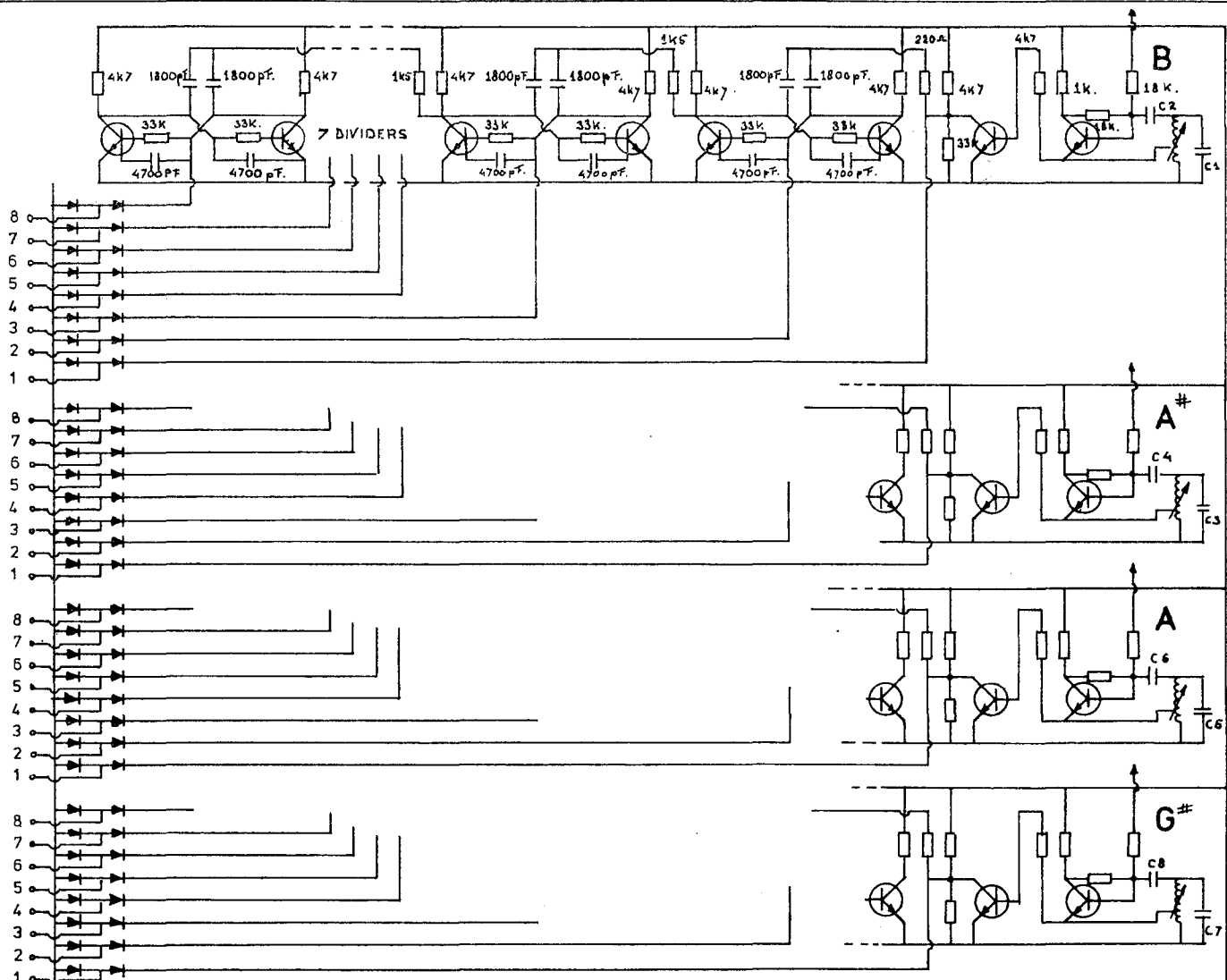
INDEX

- PAGE N^o 1 SIGNAL AND POWER BLOCK DIAGRAM
- " " 2 POWER SUPPLY
- " " 3 GENERATORS
- " " 4 KEYING SWITCHES UPPER, LOWER, AND PEDAL
- " " 5 PRE AMPS UPPER MANUAL
- " " 6 " " LOWER
- " " 7 " " PEDAL AND MIXTUUR
- " " 8 FILTER CIRCUITS UPPER MANUAL AND PEDAL
- " " 9 " " UPPER
- " " 10 " " LOWER MAN, PEDAL, AND MIXTUUR
- " " 11 ECHO AND REVERBERATION CIRCUIT
- " " 12 STOP CIRCUIT CONNECTIONS TO AMPLIFIERS
- " " 13 AMPLIFIER CIRCUIT AND LOUDSPEAKERS CONNECTIONS
- " " 14 ADJUSTMENTS AND CONNECTIONS
- " " 15 MAIN CONNECTIONS

SIGNAL AND POWER BLOCK DIAGRAM			
DATE	DESIGN	DRAWN	MODIFIED
15.6.71	J. VERSTEEGT.	(8)	
			JOHANNUS ORGEL
			TYPE K-II
ELECTRONIUM			PAGE N ^o 1
COPYRIGHT: J. VERSTEEGT. TUISSTRAAT 10, VEENENDAAL, HOLLAND. (TEL. 08365.10220)			



POWER SUPPLY				JOHANNUS ORGEL	
DATE	DESIGN	DRAWN	MODIFIED	TYPE: K-II	
24.5.71	J.VERSTEEGT.			K-IIB H-IIB	
ELECTRONIUM				PAGE NO	
COPY RIGHT: J.VERSTEEGT.				2	

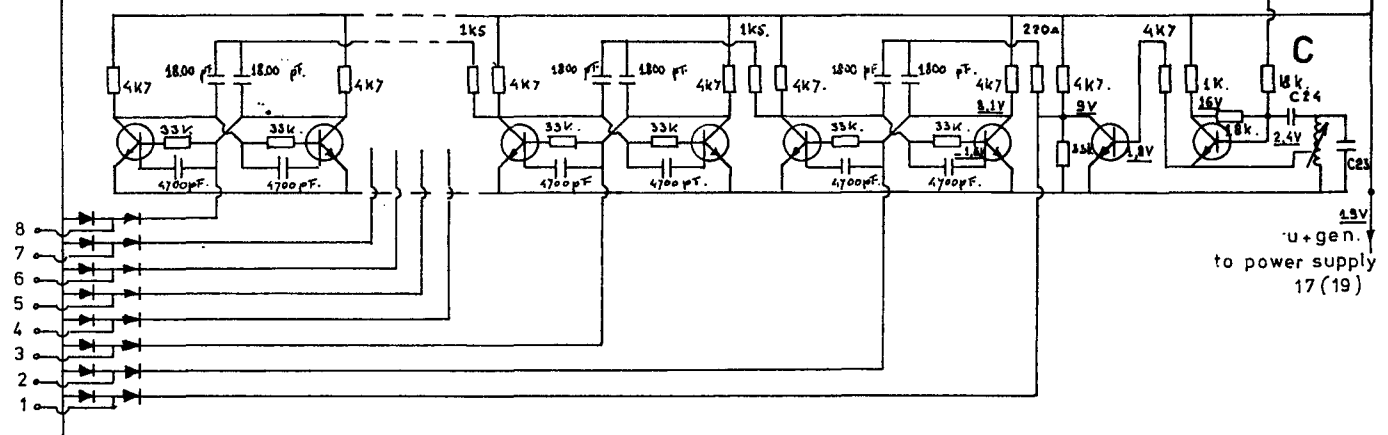


TO KEYING CIRCUITS

- C 1 = 10.000 pF.
- C 2 = 12.000 pF.
- C 3 = 15.000 pF.
- C 4 = 15.000 pF.
- C 5 = 15.000 pF.
- C 6 = 15.000 pF.
- C 7 = 15.000 pF.
- C 8 = 18.000 pF.
- C 9 = 15.000 pF.
- C 10 = 18.000 pF.
- C 11 = 18.000 pF.
- C 12 = 18.000 pF.
- C 13 = 22.000 pF.
- C 14 = 22.000 pF.
- C 15 = 22.000 pF.
- C 16 = 22.000 pF.
- C 17 = 27.000 pF.
- C 18 = 27.000 pF.
- C 19 = 27.000 pF.
- C 20 = 33.000 pF.
- C 21 = 33.000 pF.
- C 22 = 33.000 pF.
- C 23 = 33.000 pF.
- C 24 = 38.000 pF.

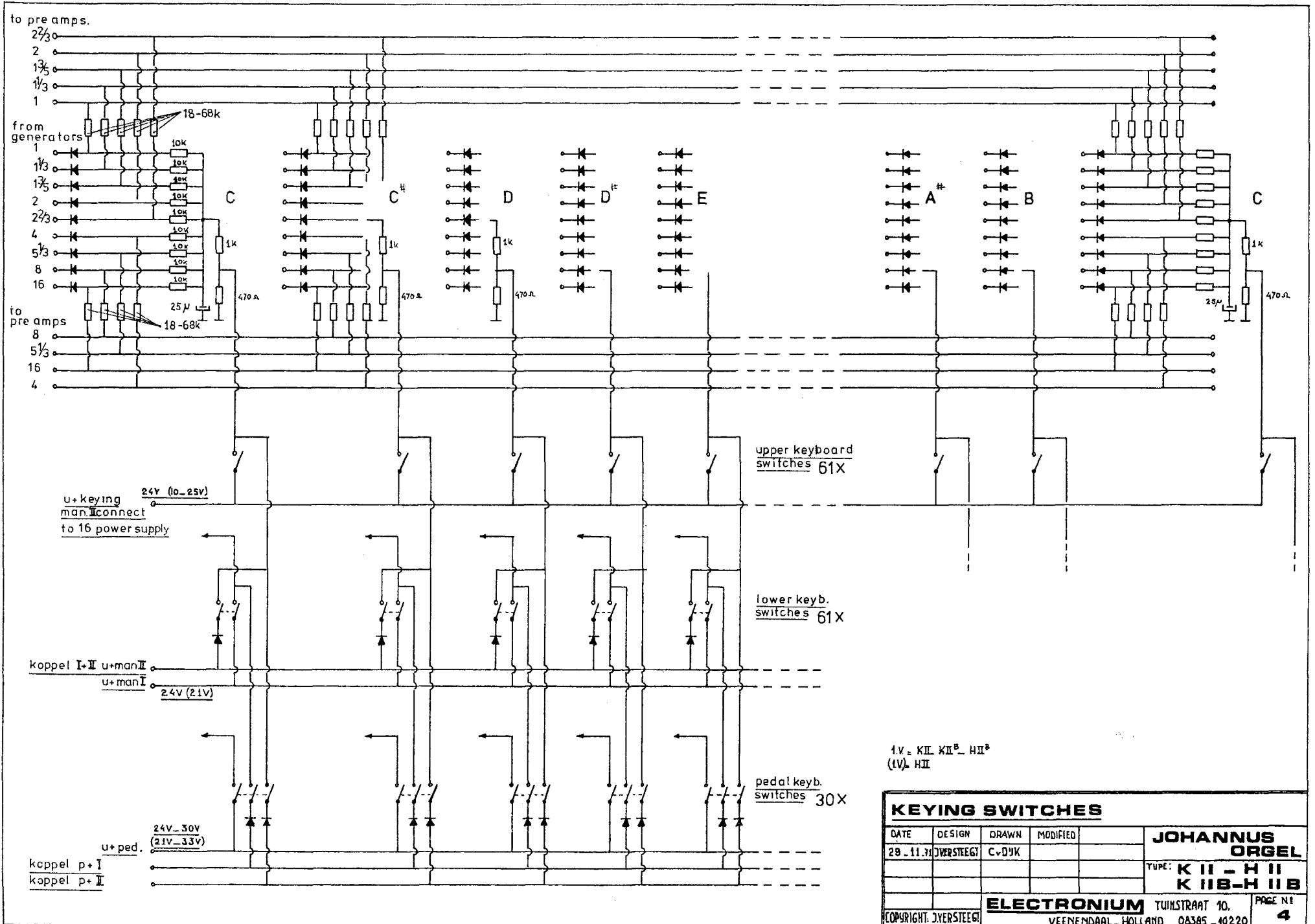
C# - G

VIBRATO LINE TO POWER SUPPLY 7 (11)



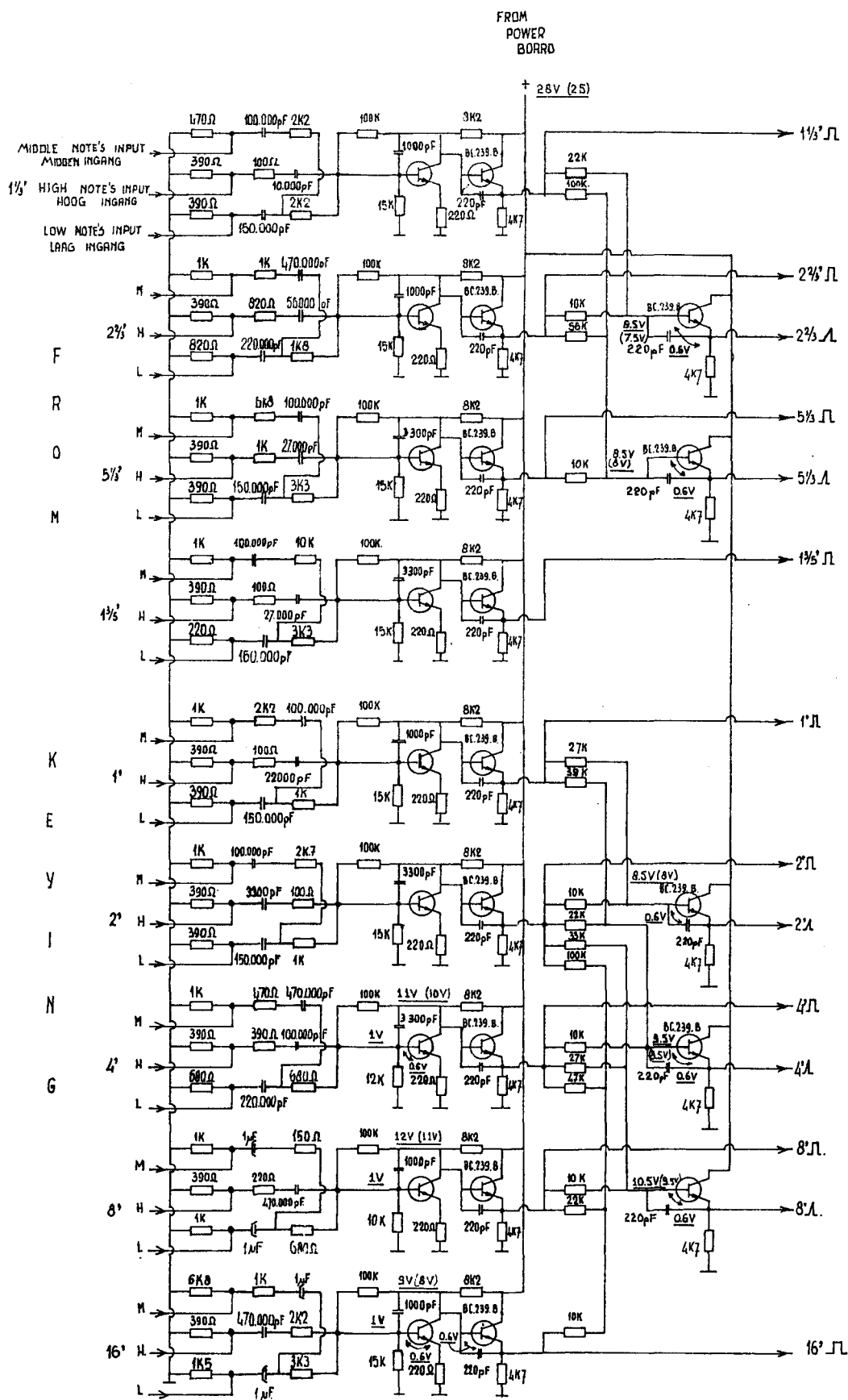
diodes line power supply 18

GENERATORS AND DIVIDERS				JOHANNUS ORGEL
DATE	DESIGN.	DRAWN	MODIFIED	
2.11.71	J. VERSTEEGT	C. DJK		TYPE K II - H II K IIB - IIB
ELECTRONIUM TUINSTRAAT 10, VEENENDAAL, HOLLAND 08585-10220				PAGE N° 3



1.V. = KII, KII^B, HII^B
(IV) HII

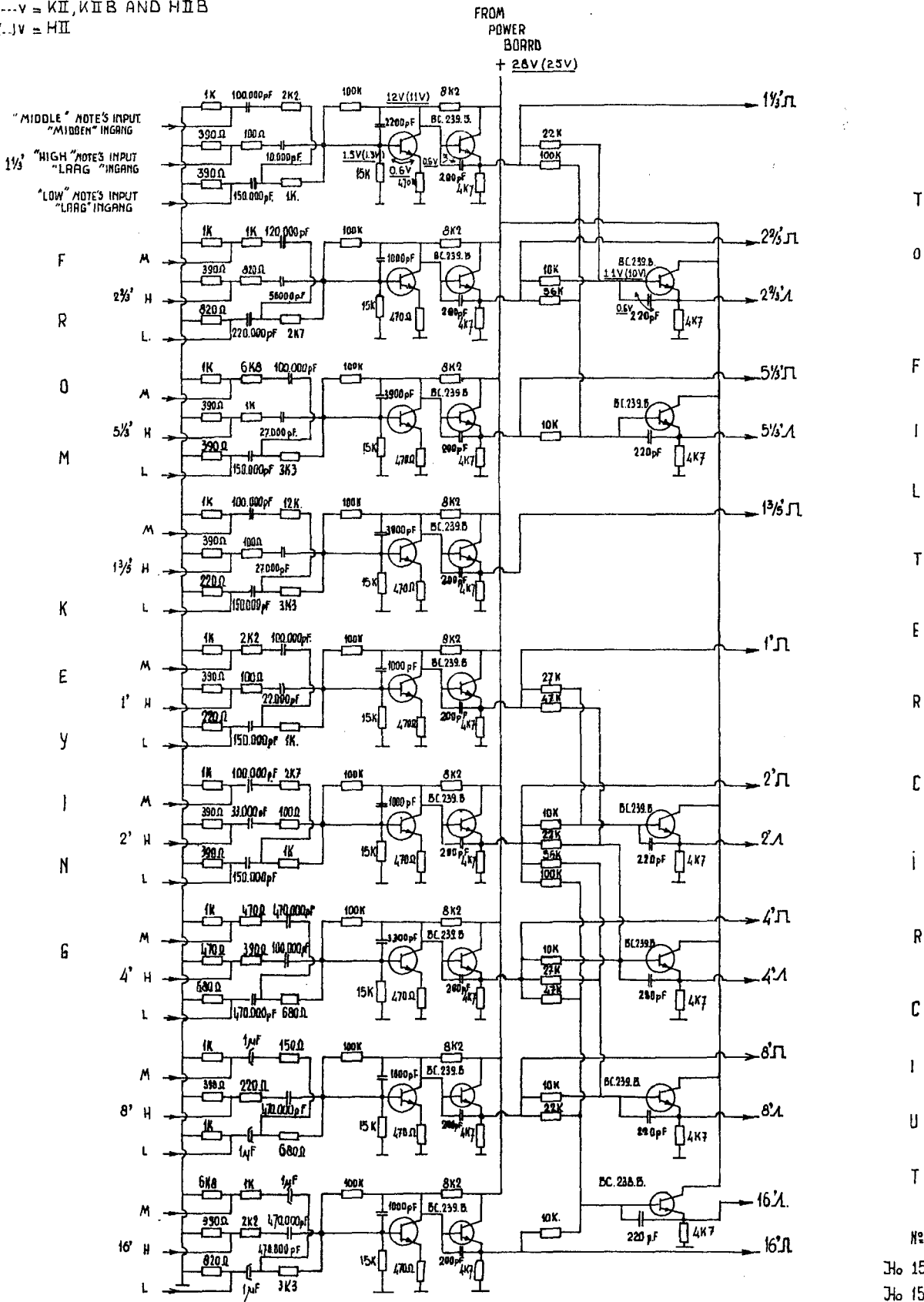
KEYING SWITCHES				JOHANNUS ORGEL	
DATE	DESIGN	DRAWN	MODIFIED	TYPE: K II - H II	
29.11.71	VERSTEEGT	C. DUJK		K IIB-H IIB	
ELECTRONIUM				TUINSTRAT 10.	PAGE N ^o 4
VEENENDAAL - HOLLAND				08385 - 40220	



PRE AMPS UPPER MANUAL

DATE	DESIGN	DRAWN	MODIFIED	JOHANNUS ORGEL	
4-3-71	J. VERSTEEGT	(S)		TYPE K II - H II K IIB-H IIB	
ELECTRONIUM				PAGE Nº	

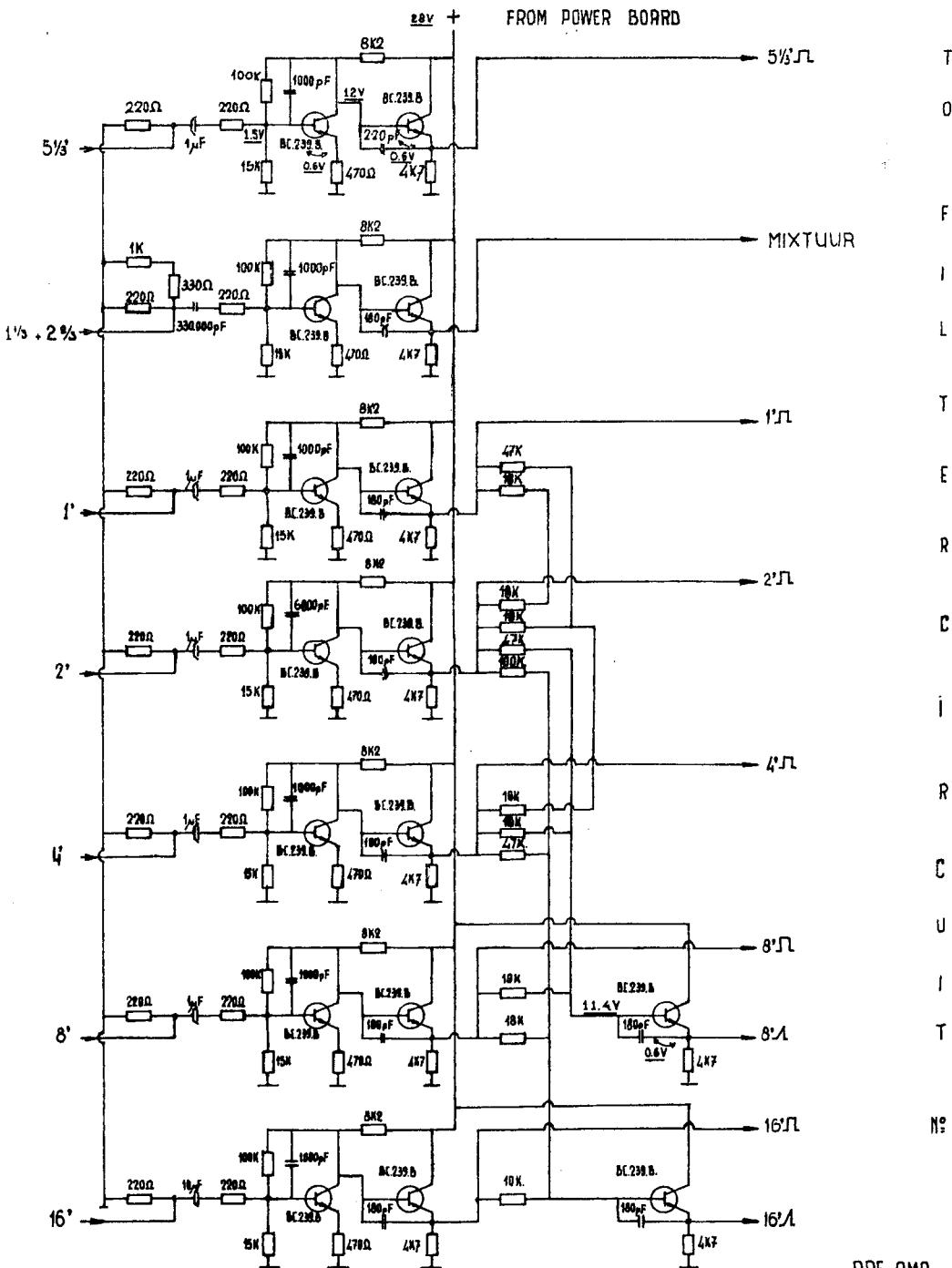
---V = KII, KIB AND HIB
 (-)V = HII



T
O
F
I
L
T
E
R
C
i
R
C
I
U
T
№
Jo 153
Jo 152

PRE AMPS LOWER MANUAL				JOHANNUS ORGEL	
DATE	DESIGN	DRAWN	MODIFIED	TYPE: K II - H II	
3.57	J. VERSTEEGT			K IIB-H IIB	
ELECTRONIUM				PAGE №	
COPYRIGHT: J. VERSTEEGT TUINSTRAAT 10, VEENENDAAL, HOLLAND. 04593-10220				6	

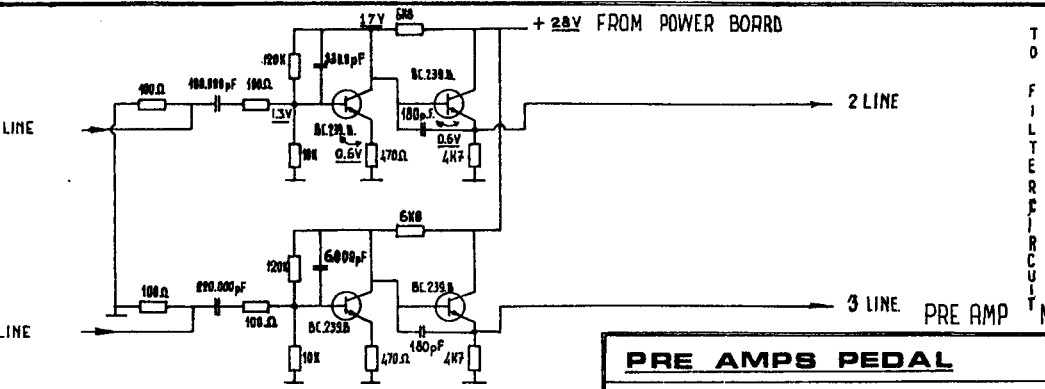
F R O M K E Y I N G



PRE AMP PEDAL

Nº Jh 151
Jh 150.

F R O M K E Y I N G

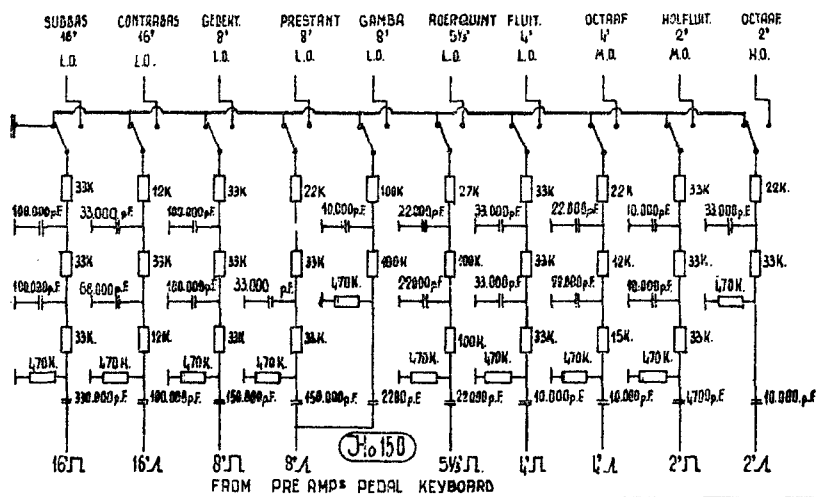


PRE AMPS MIXTUUR.

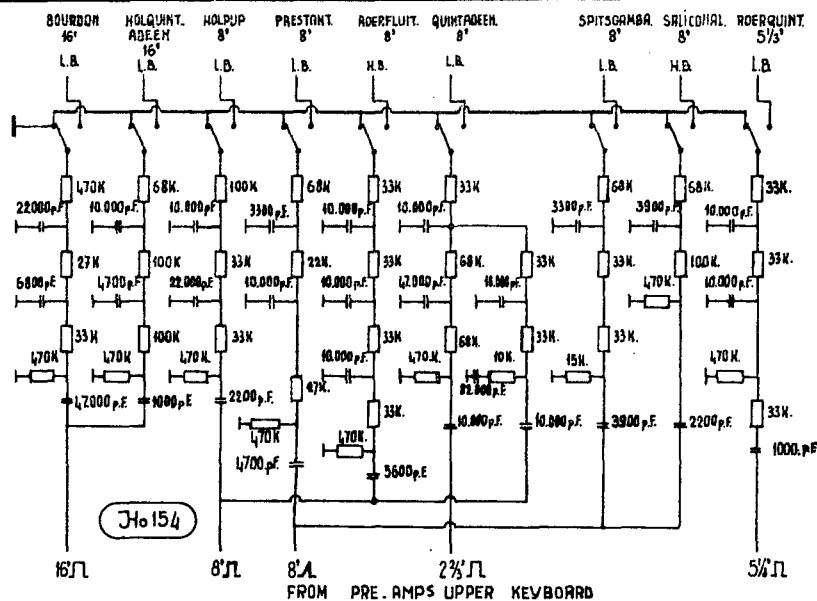
T O F I L T E R F I R C U I T

Nº Jh 151
Jh 152

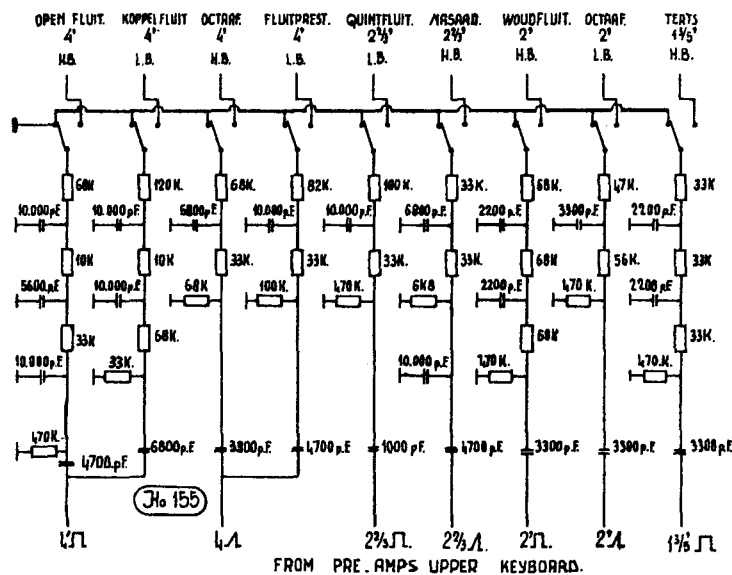
PRE AMPS PEDAL				
PRE AMPS MIXTUUR				
DATE	DESIGN	DRAWN	MODIFIED	JOHANNUS ORGEL
4-8-71	IVNSTEEGT			
				TUPE: K II - K II B
ELECTRONIUM				PAGE NR 7
COPYRIGHT: J. VERSTEEGT. TUINSTRAT 10, VEENENDAAL, HOLLAND.				08345 - 10220



LOCATED
IN
LEFT
BOARD



LOCATED
IN
RIGHT
BOARD



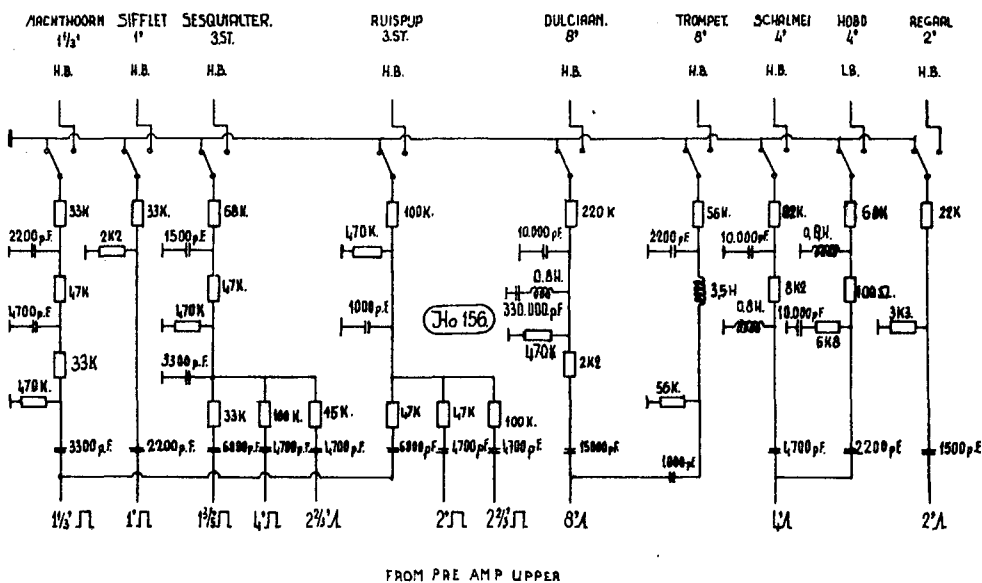
LOCATED
IN
RIGHT
BOARD.

- L.O. IS BASS AMPLIFIER.
- L.O. IS LAAG ONDER VERSTERKER.
- M.O. IS MIDDLE AMPLIFIER.
- M.O. IS MIDDEN ONDER VERSTERKER.
- H.O. IS TREBLE AMPLIFIER.
- H.O. IS HOOG ONDER VERSTERKER.
- L.B. IS BASS AMPLIFIER.
- L.B. IS LAAG BOVEN VERSTERKER.
- H.B. IS TREBLE AMPLIFIER
- H.B. IS HOOG BOVEN VERSTERKER.

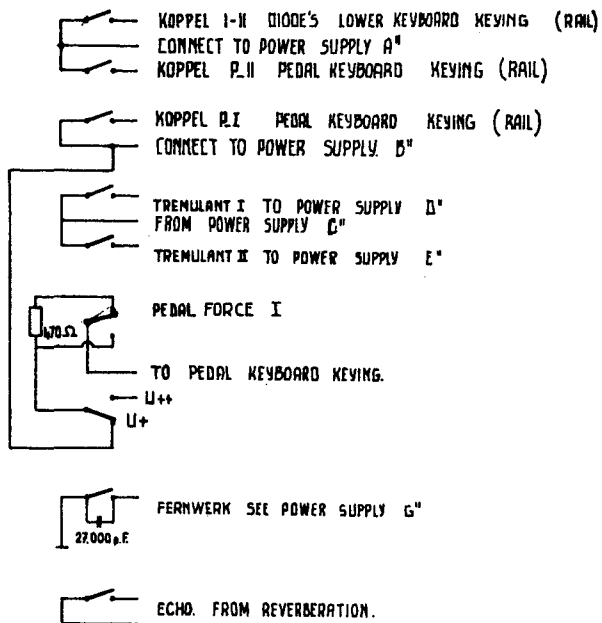
FILTER CIRCUITS

DATE	DESIGN	DRAWN	MODIFIED	JOHANNUS ORGEL	
14-5-71	J. VERSTEEGT			TYPE: K II K IIB	
ELECTRONIUM				PAGE NO	
COPYRIGHT. J. VERSTEEGT				8	

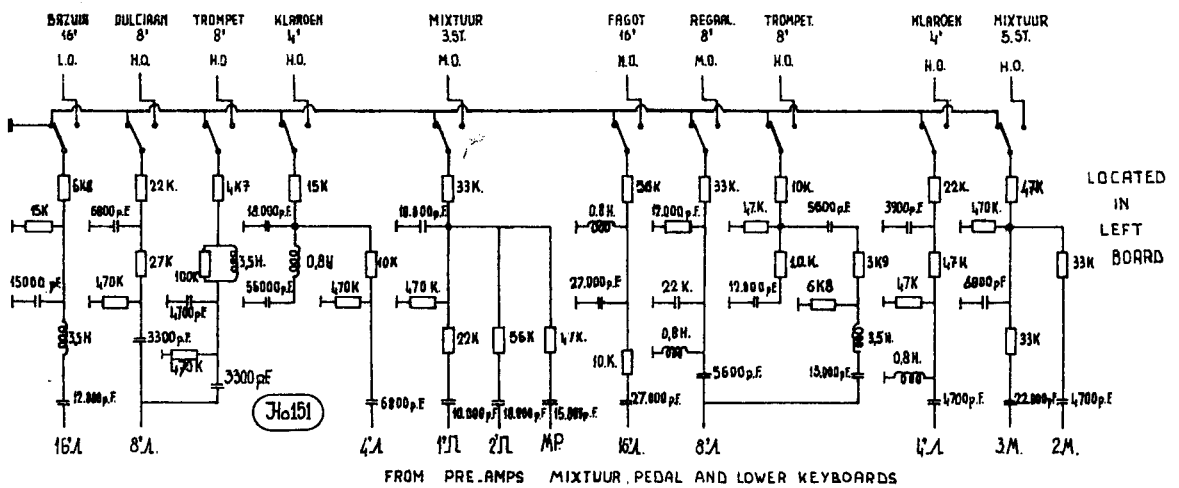
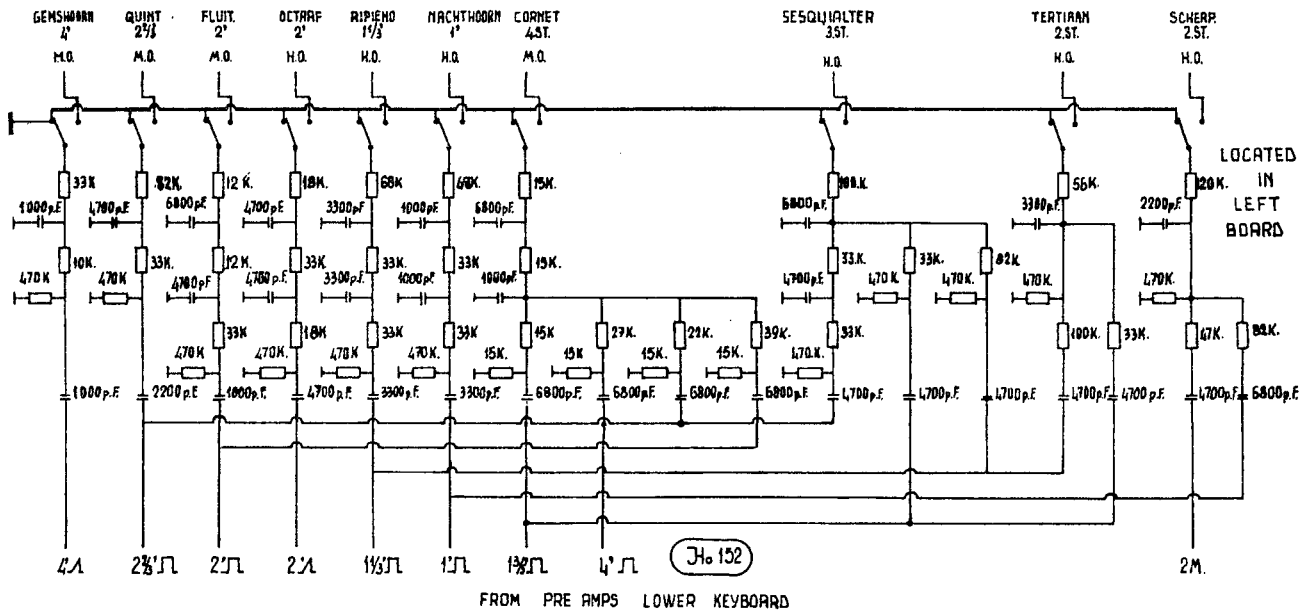
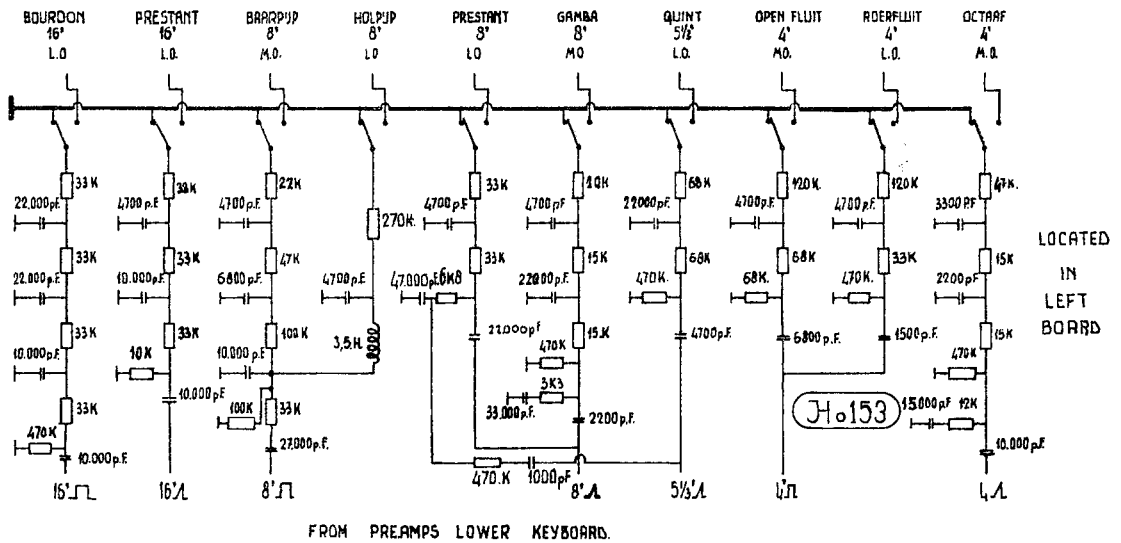
TUINSTRAT 40, VEENENDAAL, HOLLAND. TEL. 06385-10220



Ho 157

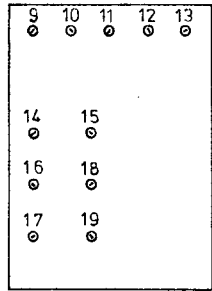


FILTER CIRCUITS AND SPEELHULPEN				
DATE	DESIGN	DRAWN.	MODIFIED.	
17.5.77	VERSTEEGT			JOHANNUS ORGEL
				TYPE: K II K IIB
ELECTRONIUM				PAGE NO
COPYRIGHT J. VERSTEEGT, TUINSTRAT 10, VEENENDAAL, HOLLAND.				9



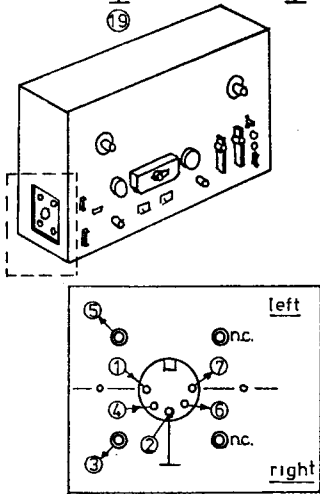
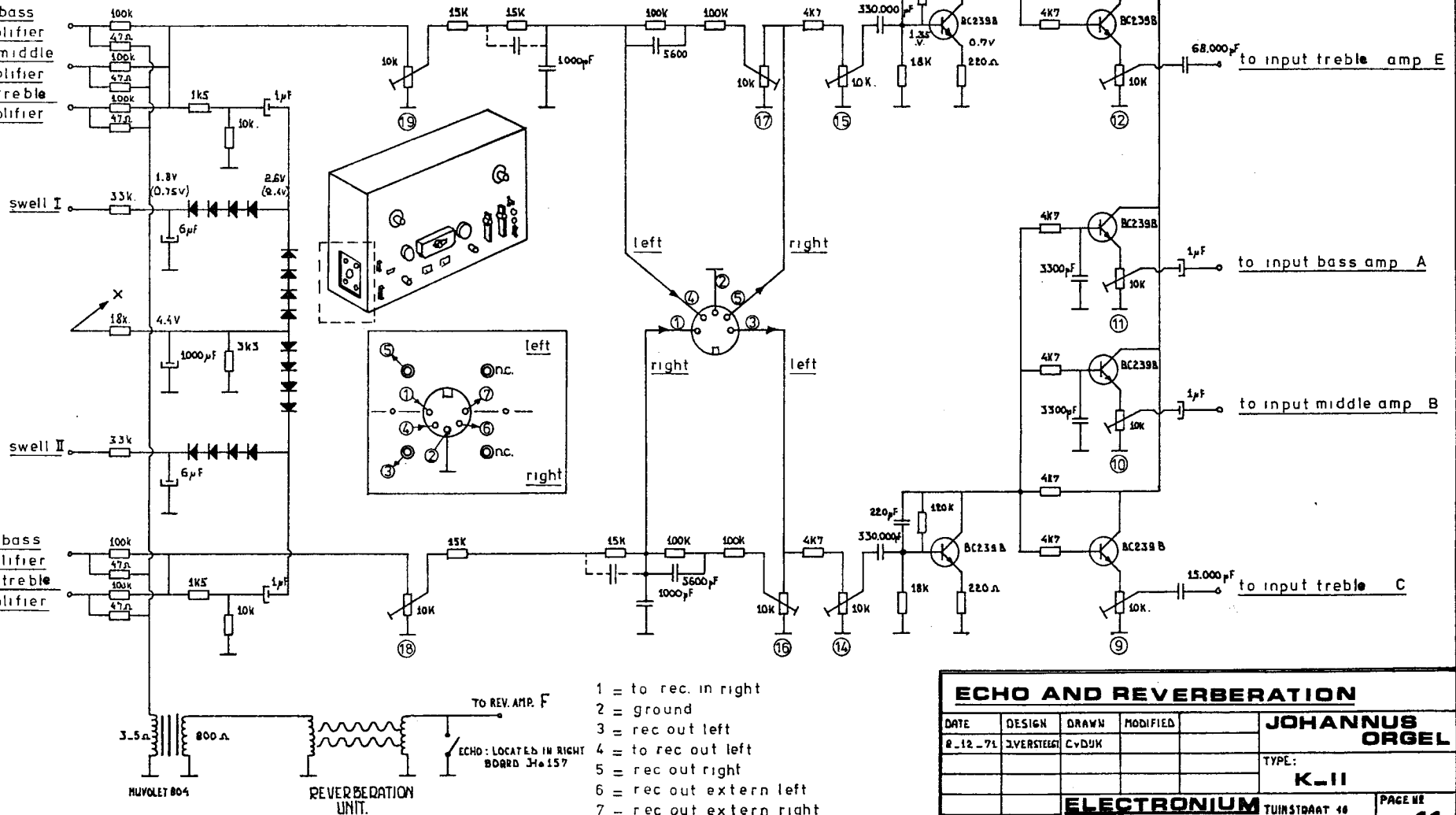
M.O. is MIDDLE AMPLIFIER. B
 MIDDEN ONDER VERSTERKER. B
 H.O. is TREBLE AMPLIFIER. C
 HOOG ONDER VERSTERKER. C
 L.O. is BASS AMPLIFIER. A
 LAAG ONDER VERSTERKER. A

FILTER CIRCUITS			
DATE	DESIGN	DRAWN	MODIFIED
12.5.71	J. VERSTEEGT	JVB	
JOHANNUS ORGEL			
TYPE: K-II K-II B			
ELECTRONIUM			
COPYRIGHT. J. VERSTEEGT. TUINSTRAAT 10, UEEHENDAL, HOLLAND. TEL. 08385-102.20.			



- 9 = internal echo out to bass amplifier A
- 10 = " " " " middle " B
- 11 = " " " " treble " C
- 12 = " " " " bass " D
- 13 = " " " " treble " E
- 14 = " " " " time man I - pedal
- 15 = " " " " man II
- 16 = external " " man I - pedal
- 17 = " " " " man II
- 18 = input from man II
- 19 = " " " " man I - pedal

from output bass amplifier
from output middle amplifier
from output treble amplifier



- 1 = to rec. in right
- 2 = ground
- 3 = rec out left
- 4 = to rec out left
- 5 = rec out right
- 6 = rec out extern left
- 7 = rec out extern right

ECHO AND REVERBERATION					JOHANNUS ORGEL	
DATE	DESIGN	DRAWN	MODIFIED			
R_12_71	JVERSTEGT	CVDJH			TYPE:	
					K-II	
ELECTRONIUM				TUINSTRAAT 10		PAGE NR
COPYRIGHT: JVERSTEGT				VEENENDAAL - HOLLAND (05385-4220)		11

MANUAL I

1	2	3	4	5	6	7	8	9	10
		MO			MO		MO		MO
LO	LO		LO	LO		LO		LO	

MANUAL II

41	42	43	44	45	46	47	48	49
				HB				
LB	LB	LB	LB		LB	LB	LB	LB

MANUAL I

11	12	13	14	15	16	17	18	19	20
			HO	HO	HO		HO	HO	HO
MO	MO	MO				MO			

MANUAL I

50	51	52	53	54	55	56	57	58
HB		HB			HB	HB		HB
	LB		LB	LB			LB	

PEDAL

MANUAL I

21	22	23	24	25	26	27	28	29	30
	HO	HO	HO				HO	HO	HO
				MO	MO	MO			
LO									

MANUAL II

59	60	61	62	63	64	65	66	67
HB	HB	HB	HB	HB	HB	HB		HB
							LB	

PEDAL

31	32	33	34	35	36	37	38	39	40
							MO	MO	MO
LO	LO	LO	LO	LO	LO	LO			

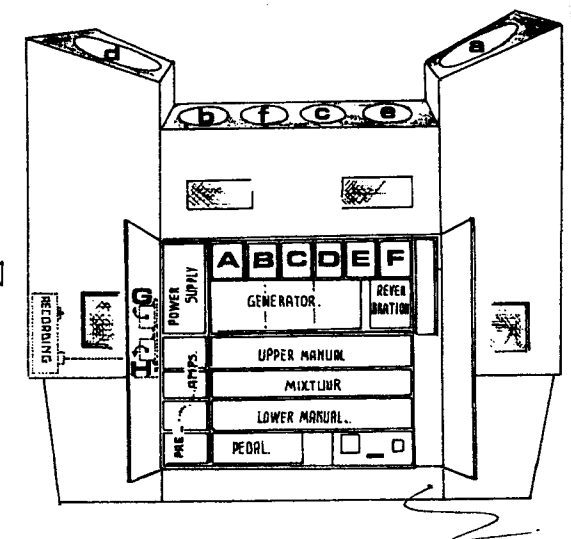
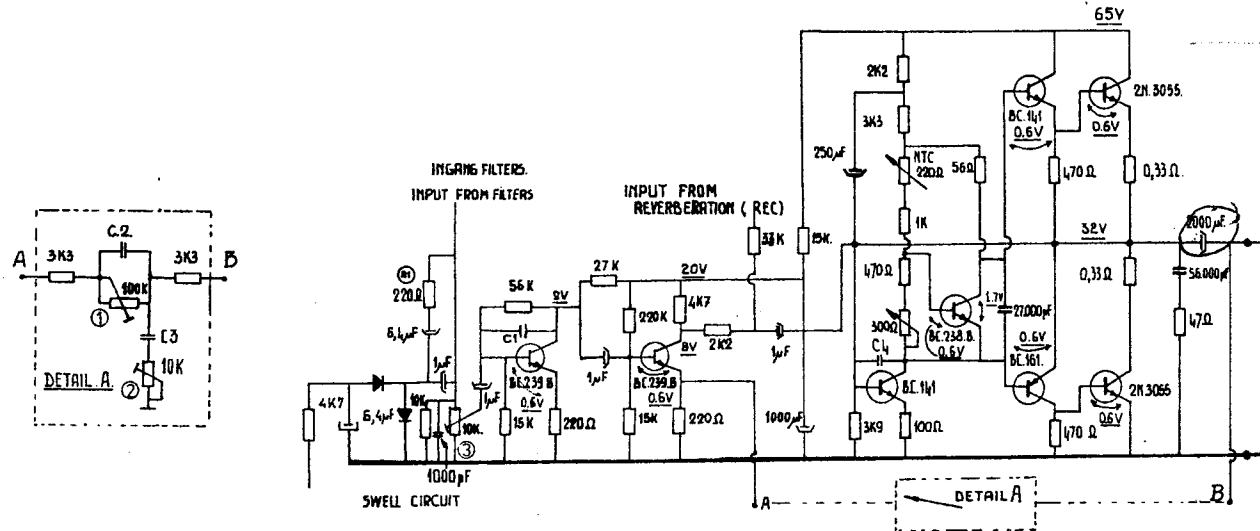
SPEELHULPEN

68	69	70	71	72	73	74	75	76

LO = BASS AMP (A)
 MO = MIDDLE AMP (B)
 HO = TREBLE AMP (C)
 LB = BASS AMP (D)
 HB = TREBLE AMP (E)

} LOWER MANUAL
 } UPPER MANUAL

STOP CIRCUITS CONNECTIONS				
DATE:	DESIGN:	DRAWN:	MODIFIED:	JOHANNUS ORGEL
7.12.71	J.VERSTEEGT			TYPE:
				K-11
				ELECTRONIUM TWINSTRAAT 10
				VEENENDAAL - HOLLAND (08385.10220)
				PAGE No 12
COPYRIGHT: J.VERSTEEGT				

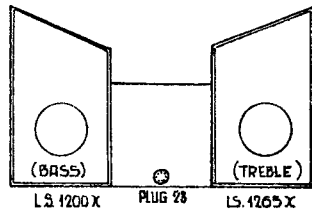


- A:** BASS AMPLIFIER I:
LAAG VERSTERKER I
- C1 = 470 pF
C2 = 68.000 pF
C3 = 330.000 pF
C4 = 6800 pF
R1 = NOT CONNECTED.
- B:** MIDDLE AMPLIFIER I:
MIDDEN VERSTERKER I
- C1 = 2200 pF
C2 = 68.000 pF
C3 = 330.000 pF
C4 = 1000 pF
- C:** TREBLE AMPLIFIER I:
HOOG VERSTERKER I
- C1 = 470 pF
C2 = 68.000 pF
C3 = 300.000 pF
C4 = 470 pF
- D:** BASS AMPLIFIER II:
LAAG VERSTERKER II
- C1 = 470 pF
C2 = 68.000 pF
C3 = 150.000 pF
C4 = 3900 pF
R1 = NOT CONNECTED.

- E:** TREBLE AMPLIFIER II:
HOOG VERSTERKER II
- C1 = 470 pF
C2 = 68.000 pF
C3 = 47.000 pF
C4 = 2200 pF
- F:** REVERBERATION AMPLIFIER:
MAGALM VERSTERKER
- C1 = 220 pF
C2 = 100.000 pF
C3 = 47.000 pF
C4 = 220 pF
- G:** EXTERNAL REVERBERATION AMPLIFIER:
VERSTERKER BIJ RECORDER
- C1 = 470.000 pF
C2 = 100.000 pF
C3 = 47.000 pF
C4 = 4700 pF
- H:** EXTERNAL REVERBERATION AMPLIFIER:
VERSTERKER BIJ RECORDER
- C1 = 470.000 pF
C2 = 100.000 pF
C3 = 4700 pF
C4 = 4700 pF

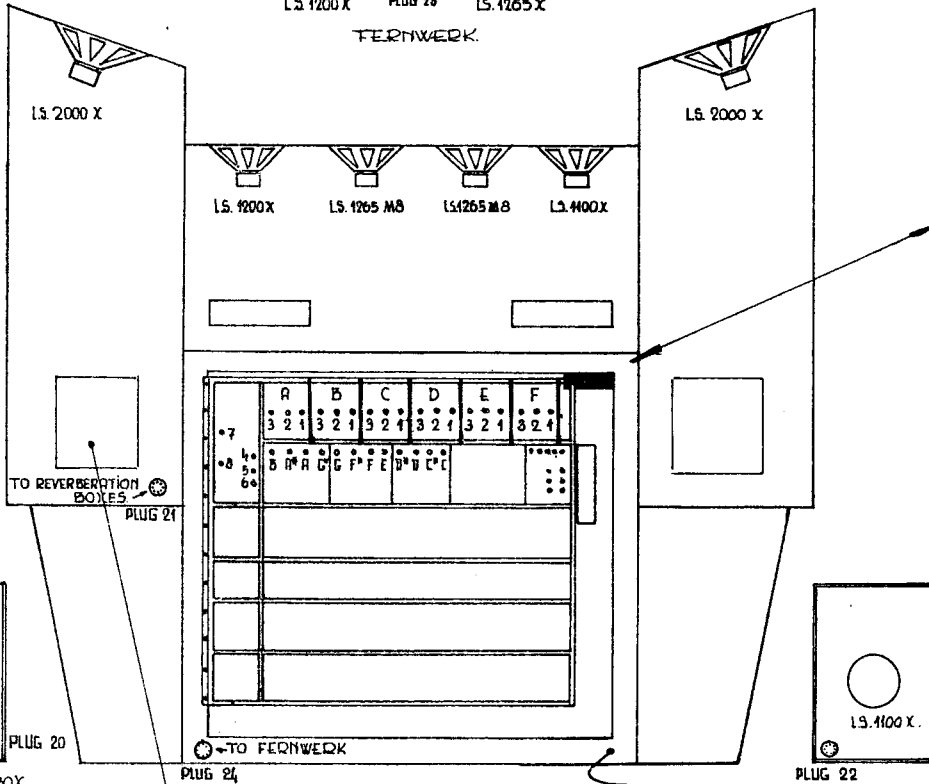
- LOUDSPEAKER 'a' CONNECTED TO AMPLIFIER 'A'
LUIDSPREKER 'a' AANGESLOTEN OP VERSTERKER
- LOUDSPEAKER 'b' CONNECTED TO AMPLIFIER 'B'
LUIDSPREKER 'b' AANGESLOTEN OP VERSTERKER
- LOUDSPEAKER 'c' CONNECTED TO AMPLIFIER 'C'
LUIDSPREKER 'c' AANGESLOTEN OP VERSTERKER
- LOUDSPEAKER 'd' CONNECTED TO AMPLIFIER 'D'
LUIDSPREKER 'd' AANGESLOTEN OP VERSTERKER
- LOUDSPEAKER 'e' CONNECTED TO AMPLIFIER 'E'
LUIDSPREKER 'e' AANGESLOTEN OP VERSTERKER
- LOUDSPEAKER 'f' CONNECTED TO AMPLIFIER 'F'
LUIDSPREKER 'f' AANGESLOTEN OP VERSTERKER

AMPLIFIER CIRCUIT				
DATE	DESIGN	DRAWN	MODIFIED	JOHANNUS ORGEL
NO. 5-71	J. VERSTEEGT.			
				TYPE: K-II
ELECTRONIUM			PAGE NO	13
COPYRIGHT: J. VERSTEEGT.		TUINSTRAT 10, VEENENDAAL 08385-10220		



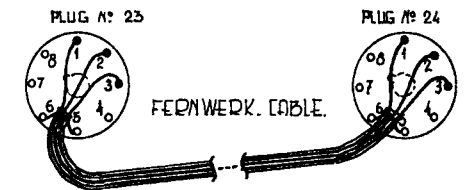
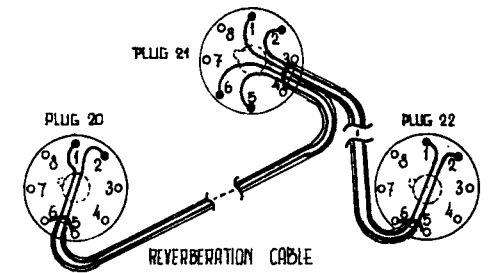
LS. 1200 X PLUG 28 LS. 1265 X

FERNWERK

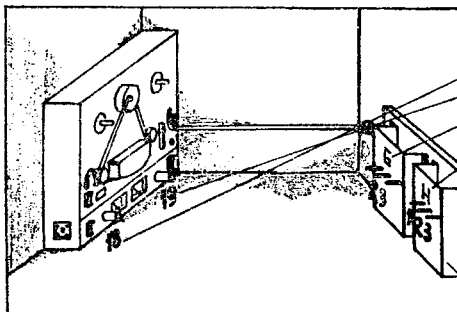


POWER SUPPLY	A	B	C	D	E	F	
• 7	•••	•••	•••	•••	•••	•••	
	3 2 1	3 2 1	3 2 1	3 2 1	3 2 1	3 2 1	
	AMPLIFIERS						
• 8	•••	•••	•••	•••	•••	•••	
	B A# A G#	G F# F E	D# D C# C				
	GENERATORS						
• 9						•••	
						13 12 11 10 9	
• 6						15 14	
						18 16	
						19 17	
						REVERBERATION	

- A: BASS AMPLIFIED
- B: MIDDLE AMPLIFIED
- C: TREBLE AMPLIFIED
- D: BASS AMPLIFIER
- E: TREBLE AMPLIFIER
- F: REVERBERATION AMP
- 1: TONE CONTROL BASS
- 2: TONE CONTROL TREBLE
- 3: VOLUME
- 4: CHORUS DEPTH
- 5: TREMULANT I DEPTH
- 6: TREMULANT II DEPTH
- 7: CHORUS SPEED
- 8: TREMULANT SPEED
- 9: INTERNAL ECHO OUT TO BASS AND A
- 10: " " " " MIDDLE " B
- 11: " " " " TREBLE " C
- 12: " " " " BASS " D
- 13: " " " " TREBLE " E
- 14: INTERNAL ECHO TIME MAN I + PEDAL
- 15: " " " " MAN II
- 16: EXTERNAL ECHO TIME MAN I + PEDAL
- 17: " " " " MAN II
- 18: INPUT FROM MANUAL II
- 19: INPUT FROM MANUAL I + PEDAL

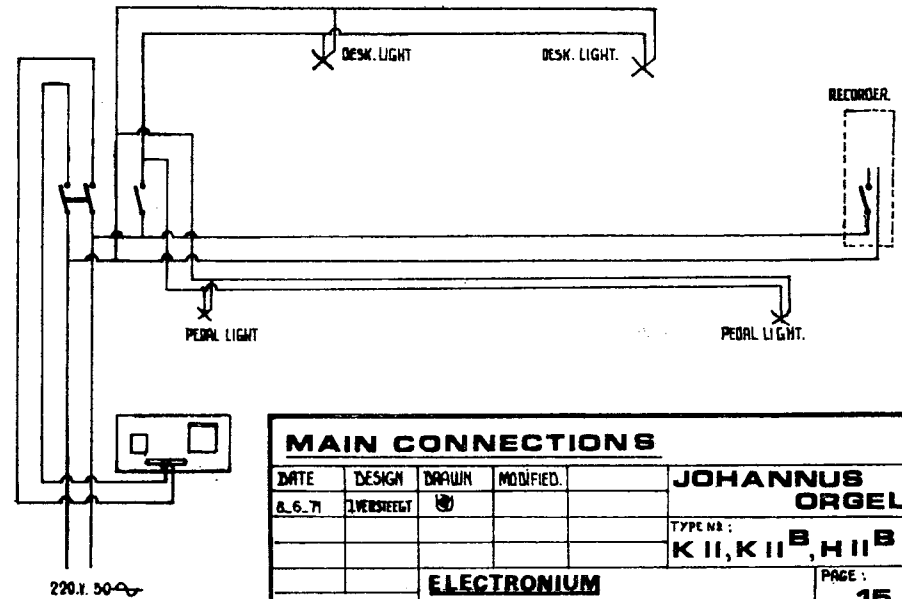
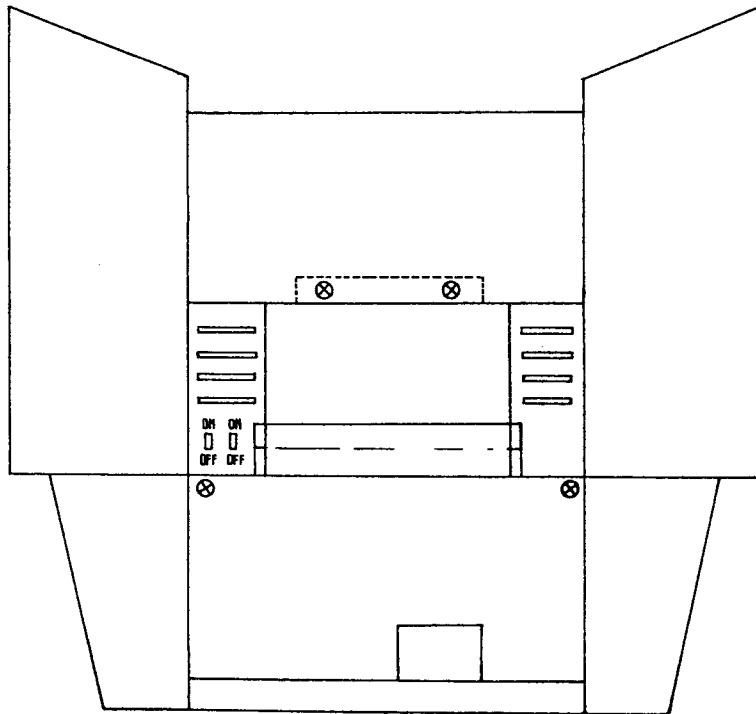
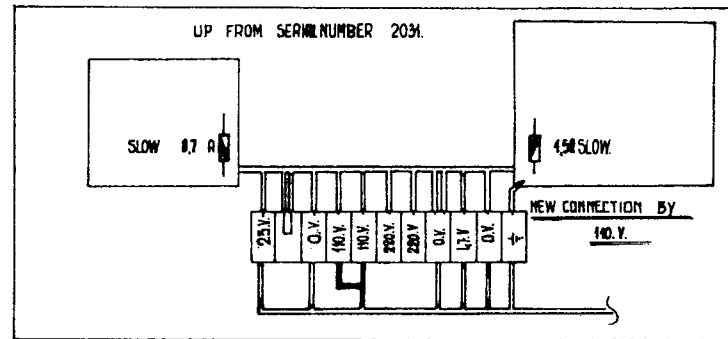
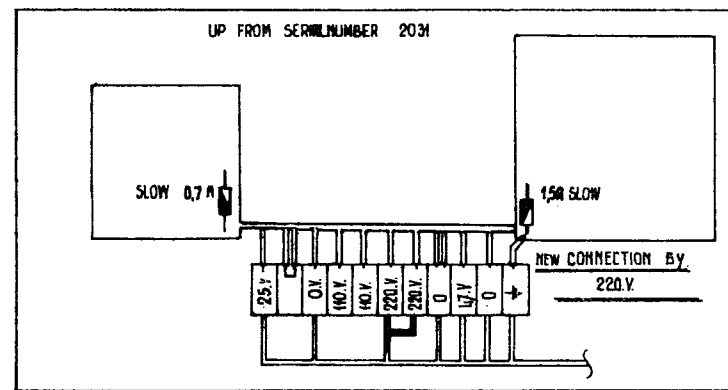
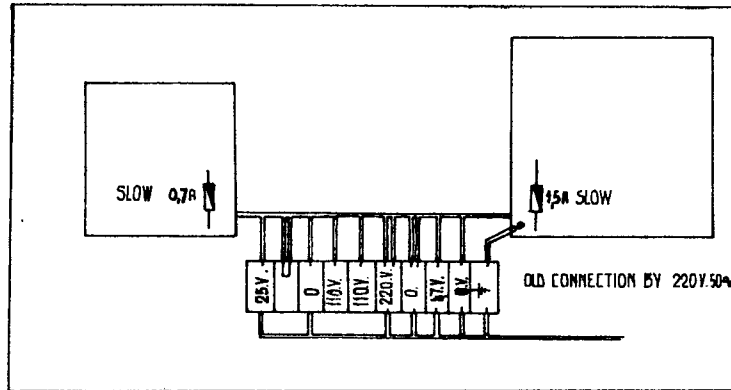


REVERBERATION



- 18: INPUT LEFT CHANNEL LOWER MANUAL
- 19: INPUT RIGHT CHANNEL UPPER MANUAL
- G: AMPLIFIER LEFT CHANNEL LOWER MANUAL
- H: AMPLIFIER RIGHT CHANNEL UPPER MAN

ADJUSTMENTS AND CONNECTIONS				
DATE	DESIGN	DRAWN	MODIFIED	JOHANNUS ORGEL
2.12.71	J. VERSTEEG			
				TYPE:
				K-II
ELECTRONIUM				PAGE 11
TUINSTRAAT 10, VEENENDAAL - HOLLAND (08385-40220)				14
COPYRIGHT: J. VERSTEEG				



MAIN CONNECTIONS				
DATE	DESIGN	DRAWN	MODIFIED	JOHANNUS ORGEL
8.6.71	J.VERSCHUET			
				TYPE NR: K II, K II ^B , H II ^B
				ELECTRONIUM
				PAGE: 15
COPYRIGHT : J.VERSCHUET, TURNSTRAAT 10, VEERENDIJK, MULLING. TEL. 06305 - 102 20.				